

**SHARP®**



AR (BC) 320

AR (BC) 260



network **office** solutions

COPY | PRINT | NETWORK SCAN | FAX

DIGITAL COLOR  
**iMAGER™**

# outstanding versatility in black and white and color

Get the performance your business needs—with the quality and reliability you expect—with the new AR-BC320/AR-BC260 Color IMAGERs™ from Sharp. Designed for busy workgroups, these productive multifunction copiers/printers can tackle everything from typical black and white office documents to color reports, proposals, and more. With a quick 32/26 ppm black/white output speed and 26/17 ppm in color, the AR-BC320/AR-BC260 IMAGERs also offer versatile paper handling, optional finishing features, and advanced network connectivity. Network scanning with Sharp's ImageSEND technology allows for a truly digital workflow, providing users with incredible convenience, speed and increased efficiency. With superb image quality, tabloid+ size capability, modular design, and integrated, easy-to-use software, the new Sharp AR-BC320/AR-BC260 Color IMAGERs will enhance your business image—and your productivity.



## FEATURES AT A GLANCE

### out-of-the-box copying

- AR-BC320:  
32 ppm b/w; 26 ppm color
- AR-BC260:  
26 ppm b/w; 17 ppm color
- 600 x 600 dpi
- 5.5" x 8.5" up to 11" x 17"
- 500-sheet adjustable paper cassettes and 250-sheet bypass tray
- Electronic sorting (SOPM)
- RADF standard on AR-BC320  
RSPF standard on AR-BC260
- Prints on heavy paper stocks up to 170 lb. Index/300 gsm

### network connectivity

- High-performance PowerPC 7410 CPU/AR-BC320: 500 MHz, AR-BC260: 400 MHz
- 640 MB maximum memory
- 40 GB Hard Disk Drive
- 10Base-T, 100Base-TX, IEEE1284 Parallel Port, and USB 1.1
- Network scanning
- Sharpdesk™ Document Management Software
- PCL5c, PS3 (optional)
- Sharp Administration Utility Suite
- Optional fax capabilities
- Optional Data Security Kit

### paper handling

- Three paper desk options
- 1,000-Sheet Saddle-Stitch Finisher
- 3,500-Sheet Large Capacity Tray (LCT)
- Hole-Punch module



3,500-sheet LCT



Two-Tray Finisher with stapling or saddle-stitching



The user-friendly touch screen LCD display guides users step-by-step through each function, making the AR-BC320/BC260 Color IMAGER incredibly easy to operate.



# powerful features and proven reliability provide a complete office solution

## State-of-the-art features designed for busy offices and workgroups.

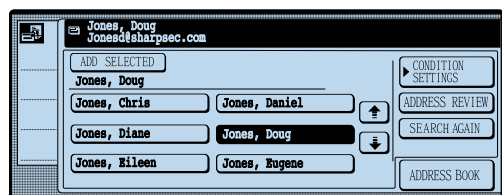
Designed for both black and white AND color usage, the AR-BC320/AR-BC260 Color IMAGERs deliver stunning image quality with 600 x 600 dpi resolution for razor-sharp type and brilliant color impact. When it gets busy, the Sharp AR-BC320/AR-BC260 Color IMAGERs handle large jobs effortlessly with an optional 3,500-sheet LCT—bringing the total online paper supply to 5,750 sheets. With electronic color sorting, you can produce multiple pamphlets, reports, presentations, and more—quickly and easily.

## Advanced network connectivity to streamline your workflow.

The AR-BC320/AR-BC260 IMAGERs deliver powerful multifunction performance that can handle just about anything. Share documents instantly with one-touch, built-in network scanning and Sharp's innovative ImageSEND technology. With scan to Desktop, e-mail, and FTP, the AR-BC320/AR-BC260 IMAGERs not only minimize overnight and courier costs, but also offer convenience, speed and increased efficiency for the entire workgroup.

## Convenient LDAP support

With innovative **LDAP support**, there's no need to manually enter a recipient's address. Simply enter the first few characters of the address and a list of matching names to select from is displayed. For increased security, **User Authentication** requires users to log in before searching for an address and sending an outbound e-mail.



With LDAP, users only need to enter the first few characters of the destination e-mail address—so sending a file is incredibly quick.

## Easy document management with Sharpdesk 3.1

Powerful, yet easy to use, Sharpdesk helps you integrate scanned documents from any application into your digital workflow. With icon-driven graphics and drag-and-drop simplicity you can organize, annotate, edit, combine and retrieve files—before you print e-mail, fax, or store them.

## Sophisticated Sharp software simplifies everyday tasks.

Manage the AR-BC320/AR-BC260 IMAGER's versatile features with Sharp's Administration Utility Suite. Includes Printer Status Monitor, Printer Administration Utility, Remote E-mail Diagnostics, and web-based management via the IMAGER Home Page.

## Extend your IMAGER's functionality with advanced, third-party solutions

Sharp's alliances with third-party developers enhance the functionality of your IMAGER with value-added solutions to leverage your investment. These software solutions include:

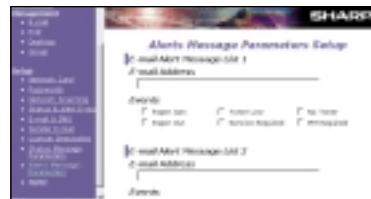
- Liberty IMS Doc2NET™
- Fabsoft Reform™
- Equitrac® Office
- AirZIP FileSecure™
- Callisto™ Print Queue Management Software

## Stay up to date with My Sharp

To make managing your new IMAGERs simple and easy, ask your local Authorized Sharp Dealer about **My Sharp**, a new dedicated customer-care website that allows you to download updates, locate resources and find information specific to your new IMAGER.



IT Managers can easily install, configure, and monitor networked printers from the desktop with Printer Administration Utility.



Remote E-mail Diagnostics enables IT Managers, Key Operators, and Authorized Sharp Dealers to automatically receive e-mails regarding the IMAGER.



Printer Status Monitor's easy-to-use interface enables you to check paper levels, toner, and more from your desktop.



AR-BC260 IMAGER

AR-BC320 IMAGER

# AR BC 320 AR BC 260 specifications

<b>Copy System:</b>	Electrophotographic (LED System)
<b>Copy Sizes:</b>	Max. 11" x 17" - Min. 5.5" x 8.5"
<b>Max. Speeds (copies/prints per minute):</b>	<b>AR-BC320:</b> 32 b/w; 26 color (8.5" x 11") 17 b/w; 15 color (8.5" x 14") 15 b/w; 13 color (11" x 17") 13 b/w; 13 color (8.5" x 11" 170# Index, 300 gsm) 7 b/w; 7 color (12" x 18") <b>AR-BC260:</b> 26 b/w; 17 color (8.5" x 11") 15 b/w; 10 color (8.5" x 14") 13 b/w; 8 color (11" x 17") 13 b/w; 13 color (8.5" x 11" 170# Index, 300 gsm) 7 b/w; 5 color (12" x 18")
<b>Continuous Copy:</b>	Maximum 999 copies
<b>First Copy Out Time:</b>	AR-BC320: Approx. 7 seconds b/w; 8 seconds color AR-BC260: Approx. 8 seconds b/w; 12 seconds color
<b>Warm-Up Time:</b>	Less than 99 seconds
<b>Copy Ratio:</b>	Variable: 25/45% to 400% (Zoom 45% to 400% in 1% increments, total 356 steps) Can be set in horizontal and vertical directions independently AR-BC320: 25/45—400% AR-BC260: 25/50—200/400%
<b>Fixed Presets:</b>	25%, 50%, 64%, 77%, 100%, 121%, 129%, 200%, 400%
<b>Exposure System:</b>	Moving optical source (stationary platen)
<b>Max Configuration:</b>	5,750 sheets
<b>Fusing System:</b>	Oil-less / Heat rollers
<b>Developer System:</b>	Non-magnetic single component
<b>Resolution:</b>	Reading: 600 dpi / Writing: 600 dpi
<b>Print Controller:</b>	AR-BC320: 500 MHz CPU, 40 GB HDD/640 MB AR-BC260: 400 MHz CPU, 40 GB HDD/384 MB
<b>Interface:</b>	10Base-T, 100Base-TX, IEEE1284 Parallel Port, USB 1.1
<b>Supported Operating Systems:</b>	Windows NT 4.0, Windows 98/98/ME/2000/XP, Windows 2003 Server, (Mac OS: 8.—9.2.2, 10.1.5, 10.2 —10.2.8 (except 10.2.2), 10.3—10.3.3 with PS3 option)
<b>Protocols:</b>	EtherTalk, TCP/IP, Novell IPX-SPX, NetBEUI
<b>Page Description:</b>	PCL5c, PS3 (optional)
<b>Required Power Supply:</b>	AC 120 V, 60 Hz, 15 amperes
<b>Power Consumption:</b>	Max 1.5 kW
<b>Overall Dimensions:</b>	26.4" (W) x 26.6" (D) x 25.9" (H)
<b>Main Unit Weight:</b>	AR-BC320: 194 lbs; AR-BC260: 173.1 lbs.

**Optional Equipment:** Saddle-stitch Finisher (AR-F13), Hole Punch (AR-PN1B), Exit Tray (AR-TE3), Large Capacity Tray 3,500-sheet (AR-LC8), Paper Feed Desk 1 x 500-sheets (AR-D17N), Paper Feed Desk 3 x 500 sheets (AR-D18N), Paper Feed Desk 2 x 500-sheets with Duplex Module (AR-D19N), Duplex Bypass/Inverter Unit (AR-RB1), Facsimile Kit (AR-FX10), Fax Memory Expansion (AR-MM9), Postscript Expansion Kit (AR-PK4), extra Sharpdesk License Kits (AR-U11M or AR-U15M), Data Security Kit (AR-FR20U or AR-FR23U)

## Additional Functions

**Copy Functions:** APS, AMS, Auto Tray Switching, Rotation Copy, Electronic Sorting, Preheat Mode, Auto Shut-Off Timer, Auditor Interface, Job Recall (up to 10 jobs), Account Control (200 accounts), (10 Job Programs), Margin Shift, Edge Erase, Center Erase, Dual Page Copy, Cover Insertion, Transparency Inserts, Centering, Multi-shot (N in 1), Pamphlet Copy, Duplex Copy Orientation, Photo Repeat (6 settings)/ Business Card Repeat (10 up), RGB Adjust, Color Balance, Intensity, Brightness, Sharpness, Mirror Image, Single Color Mode (6 color presets), Multipage Enlargement (12 settings), Suppress Background, 11 x 17 Full-Bleed, Auto Color Calibration, Auto Color Registration, AR-BC320 includes Original Recognition and Classification System

**Print Functions:** Two-sided, Pamphlets (tiled or 2-up), Margin Shift, N-Up Printing, N-Up Border, Reverse Order, Paper Size/Custom Paper Selection, Cover Page, Transparency Inserts, Output Tray Selection, Staple/Punch, Offset, Confidential Print, Hold Print, Sample Print, Overlays, Watermarks, AGFA Monotype Color Management for the workgroup, Account Control

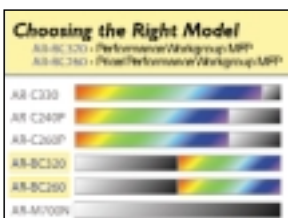
**Utilities:** Print Status Monitor, Printer Administration Utility, Integrated Installer, TWAIN Plug-in (AR-BC320), Remote E-Mail Diagnostics, Sharpdesk

**Scan Functions:** Scan to E-mail, Scan to FTP Server, Scan to Desktop with following specifications: Trial Mode, Address Directory, Destination Selection, Sender Setting, Image Setting Modes, Image Rotation, Image File Size Control

<b>Sharp Genuine Supplies:</b>	AR-C26TBU	Black Toner System
	AR-C26TCU	Cyan Toner System
	AR-C26TMU	Magenta Toner System
	AR-C26TYU	Yellow Toner System
	AR-SC2	Staple Cartridge

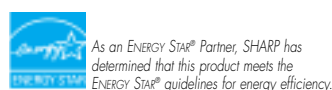
**Fax Function:** Super G3/JBIG, MH, MR, MMR, F.A.S.T. System

**Partners:** Liberty IMS (Doc2NET)  
Fabsoft (Reform Enterprise)  
Equitrac (Office)  
AirZIP (FileSecure)  
BITS (Callisto Print Management Software)



Design and specifications are subject to change without notice.

Sharp is a registered trademark of Sharp Corporation. All other trademarks are property of their respective owners.



**SHARP ELECTRONICS CORPORATION**  
Sharp Plaza, Mahwah, NJ 07430-1163  
1-800-BE-SHARP  
[www.sharpusa.com](http://www.sharpusa.com)

